

An aerial photograph of a large industrial facility, identified as Gray Ridge Egg Farms. The central building has a large section of its roof covered in solar panels. Numerous semi-trailers are parked in the lots surrounding the building. The facility is surrounded by lush green trees, and a residential neighborhood is visible in the background under a warm, golden-hour sky.

SUSTAINABILITY AT

Gray Ridge
EGG FARMS



ABOUT GRAY RIDGE EGGS

- Family-owned and operated, proudly serving Ontario for over 90 years
- Located in Strathroy & Listowel, with strong roots in Southwestern Ontario
- Supplying high-quality, locally produced eggs to grocery, foodservice, and industrial partners
- Committed to responsible growth, community partnership, and environmental stewardship



OUR SUSTAINABILITY COMMITMENT

- Sustainability is embedded in how we operate
- Focus areas include:
 - Waste reduction and resource recovery
 - Renewable energy and carbon reduction
 - Sustainable packaging and supply chain management
- Goal: to minimize environmental impact while supporting a resilient local food system

SUSTAINABLE PACKAGING

- Gray Ridge Egg's retail egg cartons are made from 100% recycled fibre pulp
- Fully recyclable and biodegradable after use
- Demonstrates our commitment to circular materials management and waste reduction



TURNING INEDIBLE EGGS INTO POWDER



- Not every egg produced meets retail standards
- As a result, the inedible eggs are considered waste
- However, we collect the inedible eggs, send them for further processing and dry them into egg powder
- The resulting product is used in animal feed and industrial applications
- Benefits:
 - Diverts significant organic material from landfill
 - Reduces greenhouse gas emissions
 - Creates new value from by-products (A circular economy success story!)
- Video on Sparks Eggs success story (similar to the further processing of GRE's inedible eggs)

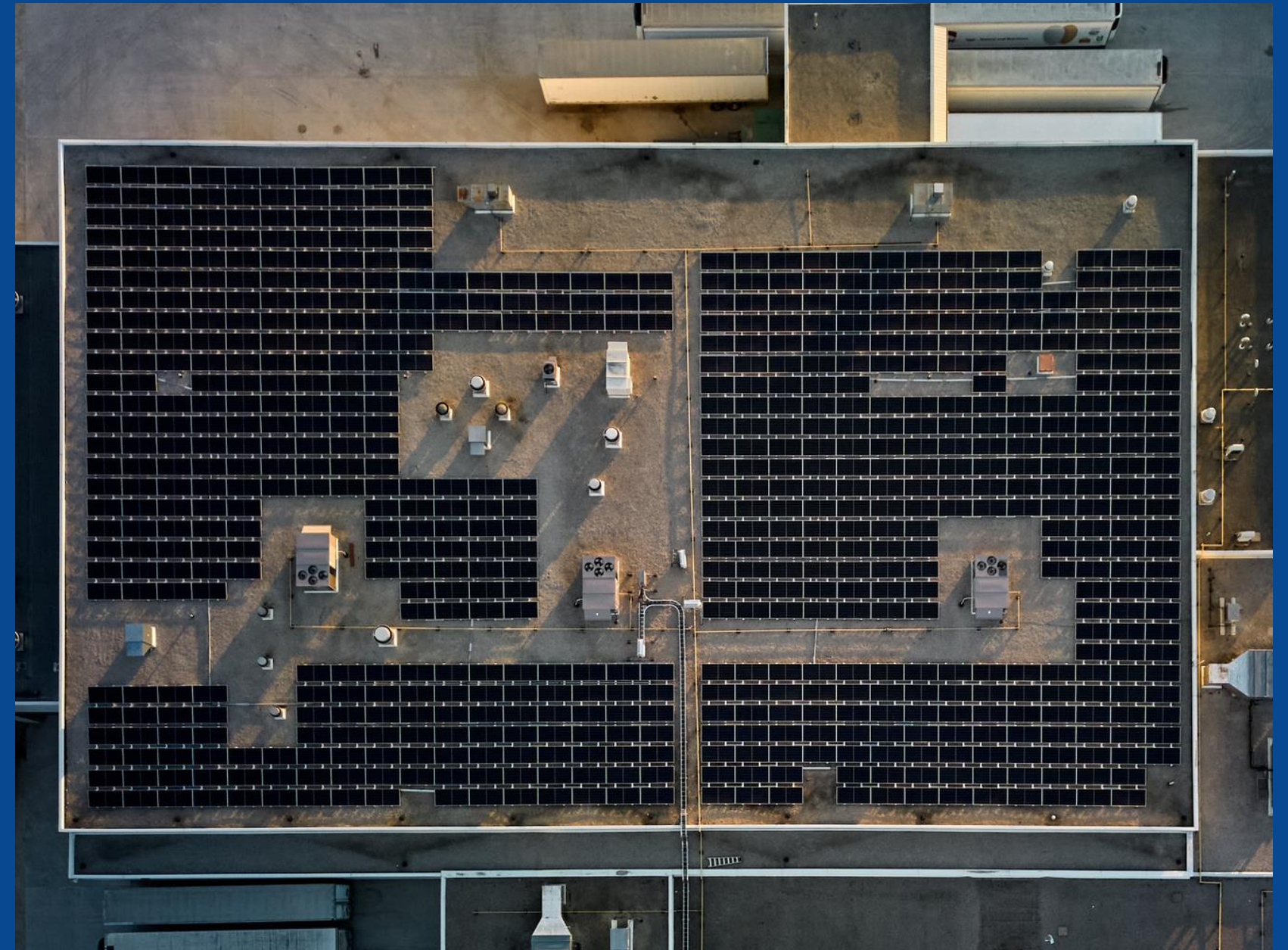


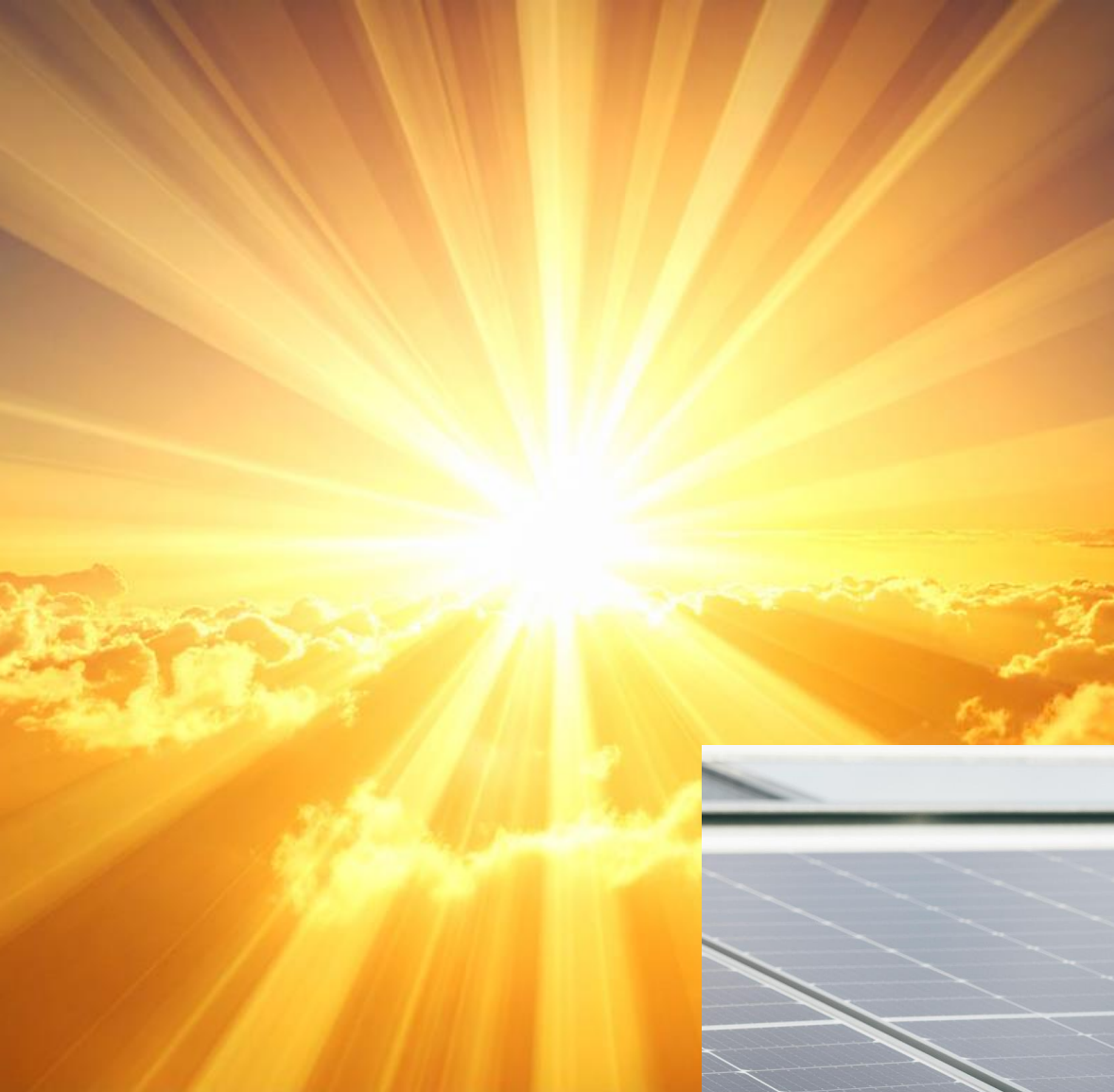
TRANSITIONING OUR REEFERS

- Transitioning company reefers to plug-in diesel/electric hybrids
- Enables operation on electric power while at the plant to keep reefers climate controlled.
- Charging stations installed at the plant to power reefers on electricity
- Reduces fuel use, emissions, and overall carbon footprint


INVESTING IN RENEWABLE ENERGY

- Installation of solar panels at Gray Ridge facilities
- Designed to offset a portion of electricity consumption
- Benefits include:
 - Reduction of Scope 2 emissions through renewable power generation
 - Long-term cost savings and improved energy resilience
 - A visible and tangible step toward a low-carbon future
- Video on GRE's Solar Project





SOLAR POWER BY THE NUMBERS

- Approximately 2000 kilowatts of potential energy across facilities in Southern Ontario
 - Powers 50–65 households worth of energy daily
 - Reduces electricity use by:
 - 26% at Strathroy
 - 13% at Listowel
 - Clean, renewable, zero-emission energy
 - Partnering with producers who have realized up to 100% reduction
- 



RECOGNIZED FOR COMMITMENT TO SUSTAINABILITY

- Recipient of the Canadian Grocer Impact Award in the Sustainability Category
- Honoured with the Business Excellence Award from the Municipality of North Perth
- These awards reflect the dedication of our entire team and our ongoing commitment to doing what's right for our business, our community, and the planet

A close-up, slightly blurred photograph of a conveyor belt in an egg processing facility. The belt is filled with rows of brown eggs, moving towards a piece of industrial machinery in the background.

CONTINUOUS IMPROVEMENT

- Building better data tracking to measure energy, waste, and emissions
- Engaging suppliers to align on sustainable sourcing and production practices
- Exploring opportunities for additional renewable installations and efficiency upgrades
- Seeking partnerships that support sustainability priorities



WORKING TOGETHER FOR A SUSTAINABLE FUTURE

- At Gray Ridge Eggs, we believe sustainability is a shared responsibility
- Our initiatives support a vision for a healthy, resilient environment
- We're proud to contribute to local progress through:
 - Responsible production practices
 - Innovation in resource recovery
 - Investment in renewable energy
- Together, we can strengthen Ontario's local food system and environmental legacy



Q & A

