

# **Summary of the Draft Aggregate Resource Strategy Report**

Huron County Council initiated a process to develop a strategy for mineral aggregate extraction, which meets environmental, economic and social objectives, while enabling the protection of aggregate resources in the county and protection of other features. Identifying sufficient areas of aggregates encourages protection for long term use. The project was directed by a Steering Committee, led by the County.

Public Information meetings have been scheduled for June 8 & 9, 2005 to provide an opportunity for public awareness and input. This is not considered a formal public meeting under the Planning Act. Amendments to local Official Plans may occur at a later date through a separate public meeting process.

At the beginning of this project a terms of reference were developed and approved by County Council outlining the purpose, goals and objectives of the Aggregate Strategy, as outlined below:

## **Terms of Reference:**

Purpose of the Aggregate Resource Strategy:

- Identify and examine the mineral aggregate resource in Huron County;
- Assess the environmental, social and economic factors as criteria to determine those areas with aggregate resource that should be protected;
- Recommend detailed policies and management directions to be incorporated into Local Official Plans;
- Consider a priority sequence for extraction for consideration in Local Official Plans.

Goals:

- Develop an Aggregate Resource Strategy for mineral resource extraction, which meets environmental, economic and social objectives, while enabling the protection of aggregate resources in the County;
- Identify and protect sufficient areas of mineral aggregates for long term use
- Recommend policies for Local Official Plans which will protect aggregate resources.

Objectives:

- Assess the extent of the aggregate resources in Huron County and their total resource potential and to analyze demand for aggregates and therefore the amount of aggregate needed for long term use;
- Establish clear and reasonable policies for processing aggregate applications in an efficient and effective manner;

- Identify and evaluate the impacts of extraction and rehabilitation scenarios on environmental, social and economic factors, and identify the preferred option;
- Prepare detailed aggregate resource policies and mapping to be incorporated into local Official Plans.

### **Background Supporting Report:**

In October 2004, the County of Huron received a report called the Aggregate Resources Inventory of Huron County from the Ontario Geological Survey and the Ministry of Northern Development and Mines (MNDM). This report is part of a series of Aggregate Resource Inventory Papers (ARIP).

The MNDM report included an inventory and evaluation of sand and gravel deposits in Huron County. The report delineates and determines the quality and quantity of aggregate within Huron County to help ensure that sufficient aggregate resource is available for future use.

Mineral aggregate deposits were classified as primary, secondary or tertiary resources by MNDM. These terms can generally be defined as follows:

- Primary: Deposits that are relatively thick, consistent and have no significant quality or quantity limitations. These deposits are comprised of high quality sand and gravel.
- Secondary: Deposits that display some variability or some quality limitations. These deposits contain high quality sand and gravel, but there may be inconsistency in the material.
- Tertiary: Deposits that are not considered to be important resource areas because of the limited availability of the resource or because of possible difficulties with extraction.

In addition to the report, the Huron County Planning Department received digital mapping which identified the location and classification of all the aggregate deposits within the County.

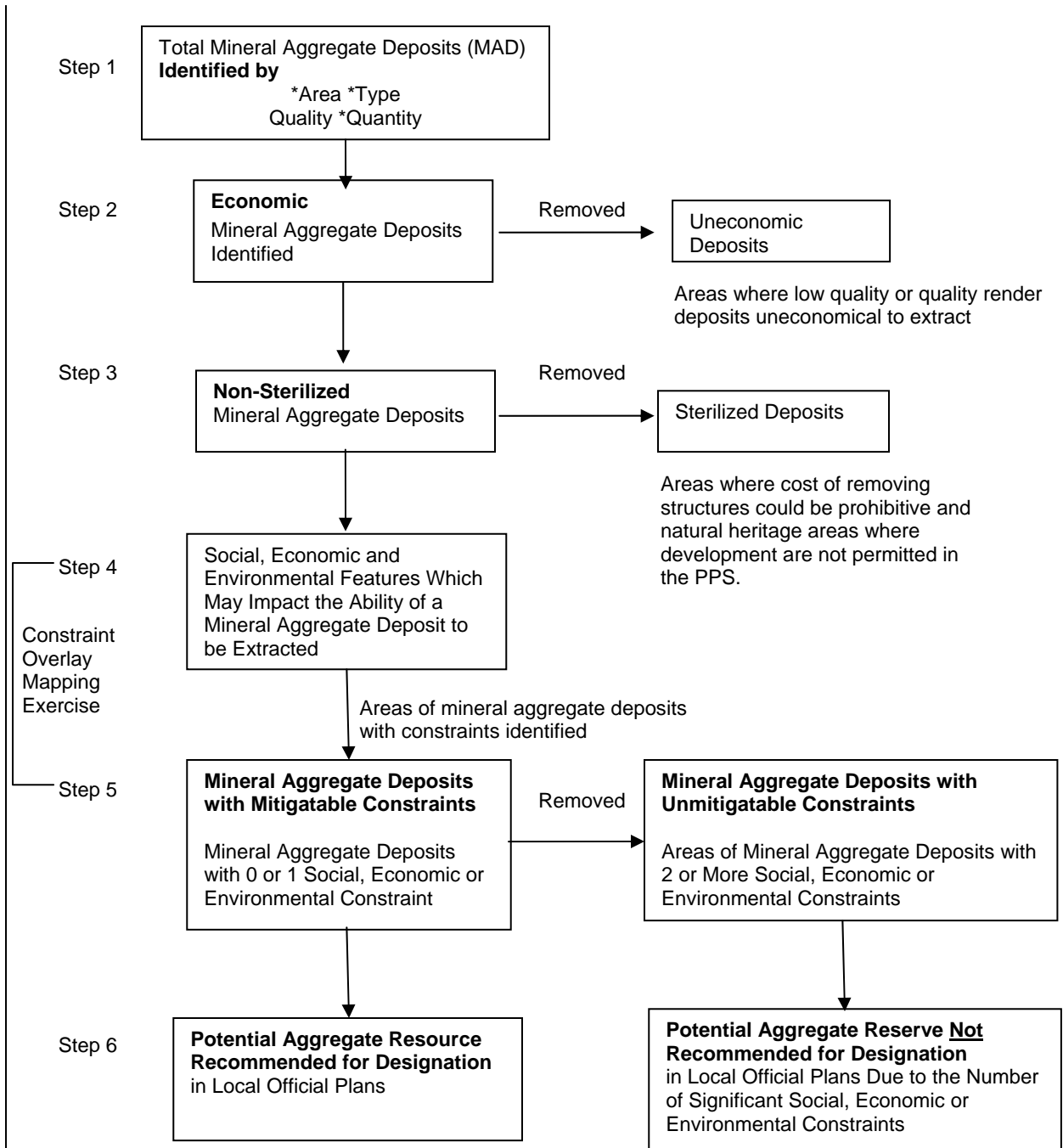
This mapping was incorporated into the County's Geographic Information System and formed the base information used in the constraint mapping exercise.

### **Process:**

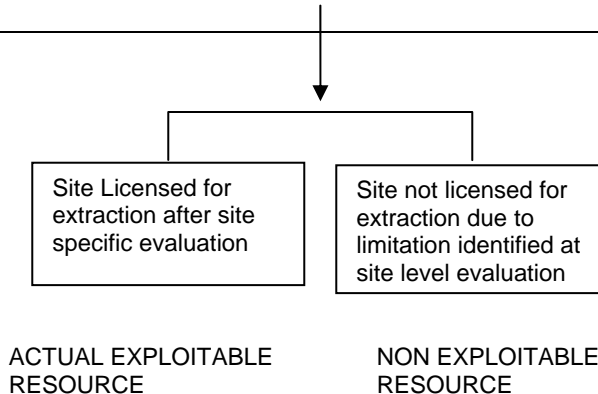
The Technical Committee followed the guidelines found in the Draft Mineral Aggregate Resource Manual published by the Ministry of Natural Resources to undertake a constraint mapping exercise.

# AGGREGATE STRATEGY PROCESS

## POLICY LEVEL EVALUATION



## SITE LEVEL EVALUATION



**Outcomes:**

The mapping exercise used to implement the process outlined above identified all primary and secondary mineral aggregate deposits in the County; the number of social or environmental constraints on the deposit and the sterilized deposits.

Following the constraint overlay mapping exercise, a number of area calculations were produced to determine the amount of the aggregate deposit with no restraints, one (1), two (2) or three (3) constraints and the amount of aggregate that was sterilized.

Over 50% of the total aggregate resource in the County is considered unconstrained. Approximately 17% of the resource is sterilized; and 9% of the resource area has 2 or more constraints.

Based on the assumption that aggregates production will remain steady in the County, there is adequate mineral aggregate deposit available to be able to balance the need for the resource with the protection of social and environmental features.

**Recommendations:**

The following recommendations were reviewed by the Steering Committee on April 28, 2005.

1. The Technical Committee recommends that the Aggregate Resource Strategy focus on aggregate deposits of primary and secondary significance. Sufficient supply of primary and secondary resource exists to supply need of the next century. By leaving most tertiary resource designated Agriculture and/or Natural Environment, it has a form of protection also.

2. That the Technical Committee recommends that the following features and buffer areas be considered as features that sterilize aggregate deposits for extraction.

<b>Sterilizing Feature</b>	<b>Buffer</b>
Urban Areas & Uses	0 Metres
Cemeteries	0 Metres
Land Fills	0 Metres
Provincially Significant Wetlands	120 Metres
Provincially Significant Life Science ANSIs	50 Metres
Elementary & Secondary Schools	30 Metres
Municipal Wellhead Capture Zones	0 Metres

3. That the Technical Committee recommends that the following features and buffer areas be considered constraints to aggregate extraction. Future permitted extraction will need to mitigate impact on these features.

<b>Constraint Feature</b>	<b>Buffer</b>
Locally Significant Wetlands	120 Metres
Locally Significant Life Science ANSIs	50 Metres
Locally Significant Woodlands	50 Metres

Sinkholes	30 Metres
Significant Valley Lands	50 Metres
Significant Flood Plains	50 Metres

4. That the aggregate deposits identified as having zero (0) or one (1) constraint on or adjacent to the deposit be recommended to be designated Mineral Aggregate in Municipal (Local) Official Plans. In these areas, a rezoning will be required in conjunction with an application for Aggregate License. These deposits will be protected from incompatible development.
5. That the aggregate deposits identified as having two (2) or three (3) constraints on or adjacent to the deposit not be designated in Municipal (Local) Official Plans. These lands may be designated through an Official Plan Amendment and rezoning subject to supporting reports and documentation.
6. That aggregate deposits located under or adjacent to a sterilizing feature be discouraged from aggregate extraction at this time. As the aggregate supply is depleted, these lands can be re-evaluated.
7. The results and findings of the Aggregate Resource Strategy should be presented to the public through a minimum of two open house/information sessions.
8. Municipalities should also be invited to the open house/information session.
9. That the Aggregate Committee (Steering & Technical Committee) host the open house/ information sessions mentioned above, and the results and recommendations of the open house/information meetings be considered by both Committees before the Aggregate Resource Strategy Report is presented to the Health & Planning Committee.
10. A draft Mineral Aggregate Policy shall be prepared for inclusion in local Official Plans. The attached schedule shows the proposed mapping changes.

**Next Steps:**

The Technical Committee and Steering Committee will review the comments received from the public and municipalities and prepare a final report to the County of Huron. If the report is approved by the County, each local municipality may then proceed to amend the text and mapping of their Official Plan.

The meetings of June 8 & 9, 2005 are being held for information purposes. These meetings are not considered formal public meetings under the Planning Act.

This process will require a formal public meeting under the Planning Act.

All approvals required under the Aggregate Resources Act must continue to be satisfied prior to aggregate licence approval.

**Contact:**

For further information, please call Brian Treble or Claire Dodds at the Huron County Department of Planning and Development 519(524-2188) or email [planning@huroncounty.ca](mailto:planning@huroncounty.ca).

Dated: May 31, 2005