



## ***A Collection of Statistical Data for Huron County and its Census Subdivisions***

The following information is a collection of statistical data describing key elements (language, labour market, income levels, migration patterns and education) for Huron County and its municipalities. Sources of information include Census (2001) and Small Area Administrative Data (1996-2001). The purpose in assembling this document was to assist planners and researchers with a quick reference source for information specific to the Huron area.

### **Index**

<i>Language (Mother Tongue).....</i>	<i>1</i>	<i>Distribution of Income.....</i>	<i>19</i>
<i>Migration.....</i>	<i>4</i>	<i>Sources of Income.....</i>	<i>20</i>
<i>Labour Force Activity.....</i>	<i>6</i>	<i>Family Type and Income.....</i>	<i>21</i>
<i>Labour Force by Occupation.....</i>	<i>7</i>	<i>Population Counts.....</i>	<i>22</i>
<i>Labour Force by Industry.....</i>	<i>13</i>	<i>Population Counts by Single Year..</i>	<i>26</i>
<i>Level of Self Employment.....</i>	<i>15</i>	<i>Commuting Patterns.....</i>	<i>31</i>
<i>Education.....</i>	<i>16</i>	<i>Graphs.....</i>	<i>32</i>
<i>Average Employment Income.....</i>	<i>18</i>		

For questions or additional information contact Bert Robertson, Labour Market Information Analyst, HRDC, London Management Area (519) 464-5025 ext. 2344 or e-mail me at [bert.robertson@hrdc-drhc.gc.ca](mailto:bert.robertson@hrdc-drhc.gc.ca)



*A Collection of Statistical Data for Huron County and its Census Subdivisions*

**Note:** *Mother tongue refers to the first language learned at home in childhood and still understood by the individual at the time of the Census. Approximately 1.2% or fewer than 1,000 people in Huron County meet the criteria of Visible Minority. This compares with 19% of the population for the province as a whole.*

<b>Population by Mother Tongue – Huron County</b>											
<b>First Language Learned at Home</b>	<b>English</b>	<b>French</b>	<b>German</b>	<b>Dutch</b>	<b>Polish</b>	<b>Chinese</b>	<b>Spanish</b>	<b>Italian</b>	<b>Portuguese</b>	<b>Ukrainian</b>	<b>Greek</b>
<b>Number of People</b>	53,445	395	2,130	1,660	80	65	60	30	20	20	15
<b>Percent of Population Huron County</b>	91.0%	0.7%	3.6%	2.8%	0.1%	0.1%	0.1%	0.1%	0.0%	0.0%	0.0%
<b>Percent of Population Ontario</b>	70.6%	4.3%	1.4%	0.6%	1.2%	1.8%	1.1%	2.6%	1.3%	0.4%	0.6%

Source: *Statistics Canada 2001 Census  
Table No. 95F0488XCB01001on.ivt*

<b>Huron County by Mother Tongue Number of People</b>										
<b>Mother Tongue</b>	<b>Huron County 58,700</b>	<b>South Huron 9,875</b>	<b>Bluewater 6,770</b>	<b>Central Huron 7,750</b>	<b>Goderich 7,405</b>	<b>Huron East 9,440</b>	<b>Howick 3,745</b>	<b>Morris-Turnberry 3,350</b>	<b>North Huron 4,965</b>	<b>Ashfield Colborne Wawanosh 5,400</b>
English	53,445	9,075	6,110	7,130	7,065	8,715	3,105	2,940	4,715	4,590
German	2,130	115	155	85	90	290	480	300	85	520
Dutch	1,660	370	180	415	65	240	95	55	95	155
French	395	70	125	35	55	30	10	15	10	50
Flemish	80	40	15	0	0	15	0	10	0	0
Danish	60	15	10	0	0	20	10	0	10	0
Hungarian	50	25	0	0	0	10	0	0	10	0

Source: *Statistics Canada 2001 Census  
Table No. 95F0488XCB01001on.ivt*

<b>Total Immigrants by Place of Birth Huron County</b>										
<b>Country of Birth</b>	<b>Huron County 58,700</b>	<b>South Huron 9,875</b>	<b>Bluewater 6,770</b>	<b>Central Huron 7,750</b>	<b>Goderich 7,405</b>	<b>Huron East 9,440</b>	<b>Howick 3,745</b>	<b>Morris-Turnberry 3,350</b>	<b>North Huron 4,965</b>	<b>Ashfield Colborne Wawanosh 5,400</b>
Netherlands	1,570	340	195	410	60	195	85	65	90	135
United Kingdom	1,045	230	125	175	130	80	45	35	60	160
United States	505	70	95	35	110	50	40	10	20	75
Germany	400	75	65	60	50	45	30	10	30	45
Switzerland	215	20	0	0	0	135	0	10	15	40
Belgium	90	40	25	0	10	15	0	0	0	0
Austria	65	10	0	15	10	0	0	0	15	0
Mexico	60	30	0	0	0	15	0	0	15	0

<b>Immigrant Population by Period of Immigration Huron County</b>										
<b>Period of Immigration (Year)</b>	<b>Huron County 58,700</b>	<b>South Huron 9,875</b>	<b>Bluewater 6,770</b>	<b>Central Huron 7,750</b>	<b>Goderich 7,405</b>	<b>Huron East 9,440</b>	<b>Howick 3,745</b>	<b>Morris-Turnberry 3,350</b>	<b>North Huron 4,965</b>	<b>Ashfield Colborne Wawanosh 5,400</b>
1961-1970	860	155	105	170	115	90	70	0	50	100
1971-1980	560	85	85	95	75	55	10	60	35	60
1981-1990	515	95	65	60	50	70	20	30	40	90
1991-2001	755	185	140	60	35	215	15	20	45	45

<b>*Visible Minorities – Huron County</b>											
<b>Total – Visible Minorities</b>	<b>Huron County</b>	<b>South Asian</b>	<b>Chinese</b>	<b>Black</b>	<b>Filipino</b>	<b>Latin American</b>	<b>Southeast Asian</b>	<b>Arab</b>	<b>West Asian</b>	<b>Korean</b>	<b>Japanese</b>
<b>Number of People</b>	695	20	145	230	10	75	115	0	0	20	45
<b>Percent of Population Huron County</b>	1.2%	0.0	0.2%	0.4%	0.0	0.1%	0.2%	0.0	0.0	0.0	0.1%
<b>Percent of Population Ontario</b>	19.1%	4.9%	4.3%	3.6%	1.4%	0.9%	0.8%	0.8%	0.6%	0.5%	0.2%

Source: Statistics Canada 2001 Census Table Nos. 95F0489XCB01001on.ivt and 95F0489XCB01001on.ivt \*(Based on 20% sample data).

## Migration

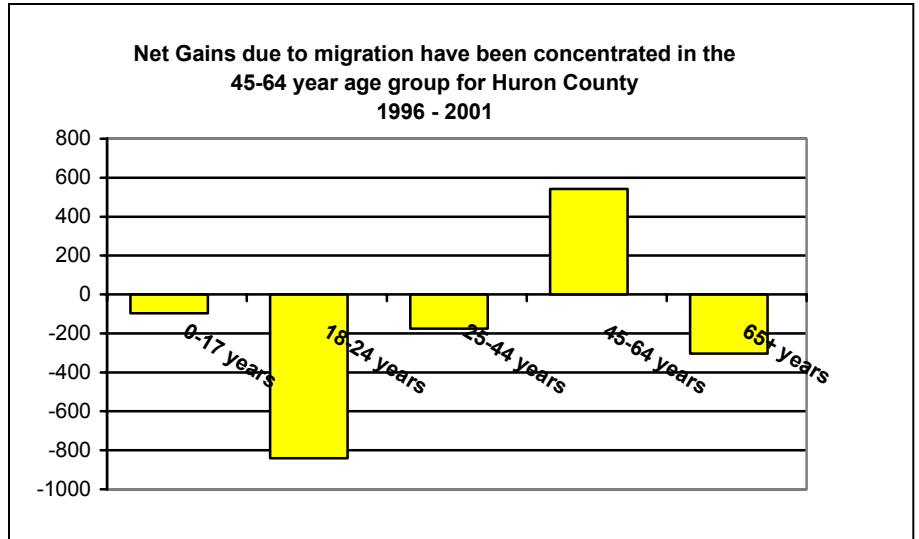
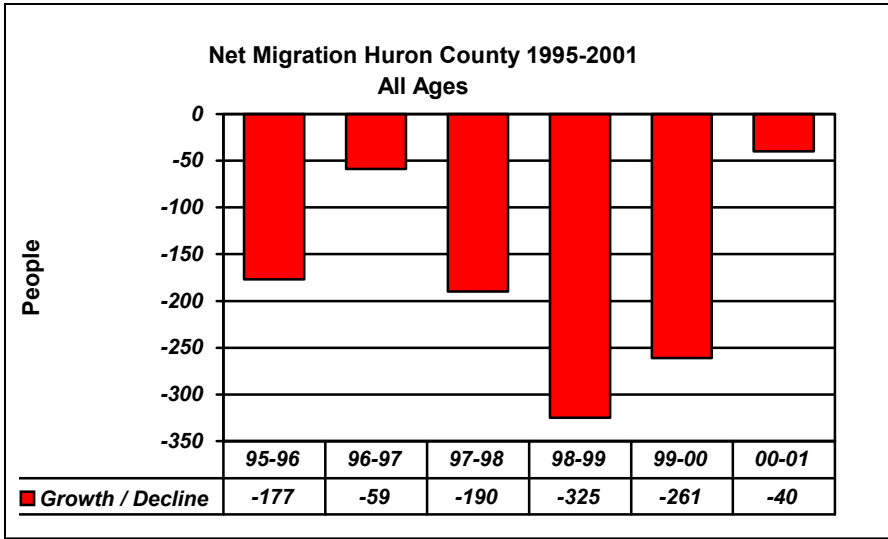
The following table sets out migration patterns for people over the age of one year. During the year of the 2001 Census, an estimated 6,065 people (10.5%) of the population, reported living at a different address than they did one year earlier. Slightly over half (56%), moved outside of Huron County.

<b>Movers and Non-Movers</b>										
	<b>Huron County</b>	<b>South Huron</b>	<b>Bluewater</b>	<b>Central Huron</b>	<b>Goderich</b>	<b>Huron East</b>	<b>Howick</b>	<b>Morris-Turnberry</b>	<b>North Huron</b>	<b>Ashfield Colborne Wawanosh</b>
<b>Total pop. 1 year +</b>	58,045	9,790	6,710	7,635	7,330	9,325	3,670	3,325	4,910	5,345
<b>Non-movers</b>	51,975	8,680	6,070	6,925	6,360	8,190	3,330	3,050	4,400	4,975
<b>Movers</b>	6,065	1,110	640	710	970	1,140	345	275	510	365
<b>Non-migrants (moved within the same community)</b>	2,640	495	195	320	510	425	135	115	275	170
<b>Migrants (moved outside the community)</b>	3,425	615	445	390	465	715	205	155	240	205
• <b>Intraprovincial migrants (moved within the Province)</b>	3,050	495	380	370	415	640	180	150	215	200
• <b>Interprovincial migrants (moved outside of the Province)</b>	215	60	0	0	50	45	20	10	25	0
<b>External migrants</b>	160	60	60	15	10	30	0	0	0	0

Source: Statistics Canada 2001 Census  
Table No. 95F0488XCB01001on.ivt

### **NOTES:**

• Non-movers	On Census Day, these people were living at the same address as they were one year earlier.
• Movers	On Census Day, these people were living at a different address.
• Non-migrants	People who were living at a different address in the same community.
• Migrants	People who were living in a different community one year earlier (internal migrants) or who were living outside of Canada one year earlier (external migrants).
• Intraprovincial migrants	People who were living in a different community than the one at which they resided one year before, in the same province.
• Interprovincial migrants	People who were living in a different community than the one at which they resided one year before, in a different province.



For each of the past five years (1996 - 2001), Huron County has seen an average of 4,400 people move either into, or out of, the area due to migration. On average, more people have moved out of the area each year than have moved in. The result is that Huron County has seen a net loss of 875 people since 1996, or a decline of 1.5% of its 1996 population base. The most recent figures indicate our historic deficit (more people leaving the area than moving here) may be leveling off. This was particularly true among those aged 0-17 and 25-44 years. Both age groups posted gains for the first time in three years. (Source: SAAD Time Series 1996-2001)

Migration Patterns By Age Group Huron County Gains and Losses 1996 - 2001 (Net)						
Age	1996-1997	1997-1998	1998-1999	1999-2000	2000-2001	1996-2001
0-17 years	45	-23	-78	-118	77	-97
18-24 years	-107	-158	-196	-192	-187	-840
25-44 years	-9	-7	-113	-62	15	-176
45-64 years	104	75	108	143	112	542
65+ years	-92	-77	-46	-32	-57	-304

## Labour Force Activity

Labour Force information for smaller communities is only available during Census years. The Census, which is conducted every five years, provides a clear picture of the labour force activity for smaller geographies. Unemployment rates across the county ranged from a high of 5.2% in Central Huron, to a low of 1.8% in Ashfield-Colborne-Wawanosh. Generally, smaller communities saw the highest level of participation rates, ranging from a high of 76.9% in Morris-Turnberry to a low of 63.8% in Goderich. Note the overall rate of unemployment in Huron County is 4%, well below the provincial average of 6.5%.

15+ by labour force activity	Huron County 58,700	South Huron 9,875	Bluewater 6,770	Central Huron 7,750	Goderich 7,405	Huron East 9,440	Howick 3,745	Morris- Turnberry 3,350	North Huron 4,965	Ashfield Colborne Wawanosh 5,400
Labour force	31,755	5,305	3,655	4,250	3,915	5,225	1,905	1,960	2,745	2,790
Employed	30,465	5,130	3,515	4,030	3,715	4,960	1,865	1,890	2,620	2,740
Unemployed	1,285	175	140	220	195	265	45	65	130	50
Not in the labour force	14,880	2,745	1,825	2,065	2,220	2,020	795	585	1,245	1,370
Participation rate %	68.1	65.9	66.6	67.3	63.8	72.1	70.6	76.9	68.7	67.1
Employment rate %	65.3	63.7	64.1	63.8	60.6	68.5	69.1	74.1	65.6	65.9
Unemployment rate %	4	3.3	3.8	5.2	5	5.1	2.4	3.3	4.7	1.8
Number of self-employed	6,250	970	840	975	420	955	470	510	470	650

Source: Statistics Canada 2001 Census  
Table No. 95F0490XCB01001on.ivt

Comparison of Labour Force Activity Ontario Versus Lambton County						
	Participation Rate	Employment Rate	Unemployment Rate	Percent Self-Employed	Percent Full-Time*	Percent Part-Time*
Ontario	68.1%	63.7%	6.5%	11.3%	84%	16%
Huron County	68.1%	65.3%	4%	19.6%		

- Source LFS Time Series (3 MMA, November 2003)

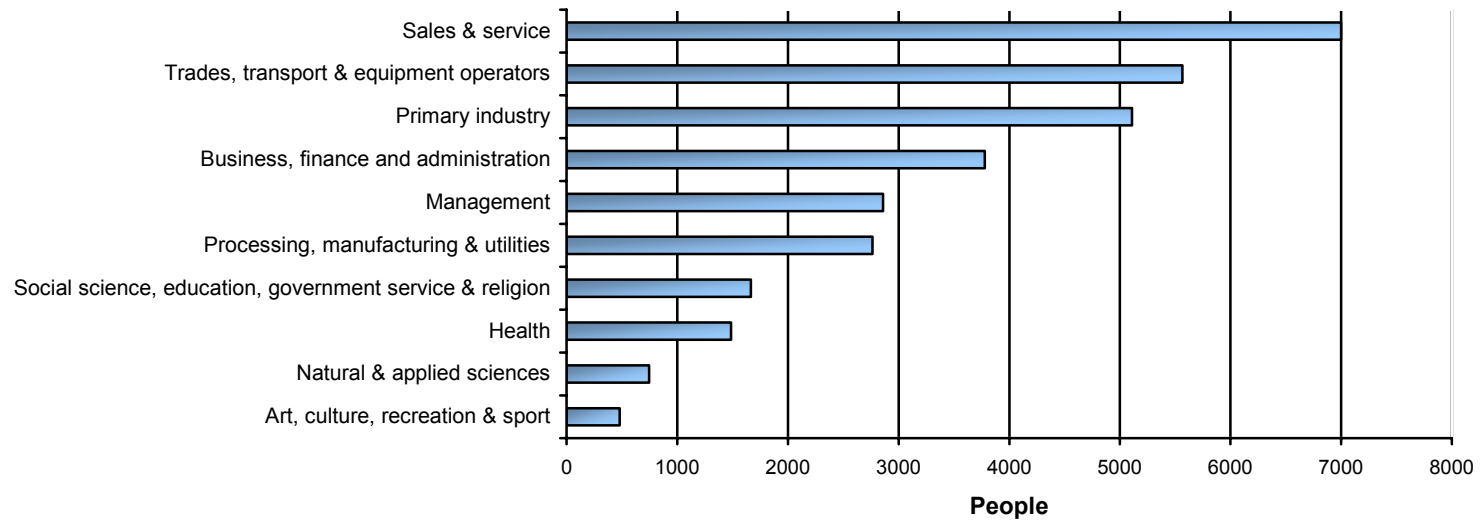
**Definitions:** The **Labour Force** consists of people employed or unemployed and searching for work. Those who are neither employed nor unemployed and are not willing or able to supply labour services are considered **Not in the Labour Force**. The **Participation Rate** is the percentage of the working age population (15+) who are seeking work or are employed. The **Unemployment Rate** is the number of people who are unemployed and looking for work as a percentage of the number of people in the Labour Force. The **Employment Rate** is the number of people employed as a percentage of the working age population.

### Labour Force by Occupation

Labour Force 15 yrs+ Major Occupational Group	Labour Force by Occupation Percent Distribution - Huron County										
	Ontario 6,086,820	Huron County 58,700	South Huron 9,875	Bluewater 6,770	Central Huron 7,750	Goderich 7,405	Huron East 9,440	Howick 3,745	Morris- Turnberry 3,350	North Huron 4,965	Ashfield Colborne Wawanosh 5,400
	%	%	%	%	%	%	%	%	%	%	%
Management occupations	11.3	9.1	10.1	12.9	8.2	9.1	7.9	6.1	6.9	10.0	8.1
Business, finance, administration occupations	18.0	12.0	15.5	13.7	12.0	15.1	9.8	7.9	7.7	10.9	9.7
Natural & applied sciences & related occupations	6.9	2.4	1.6	2.5	2.1	4.4	2.6	0.8	1.5	1.1	3.2
Health occupations	4.7	4.7	4.7	4.4	6.7	3.3	5.2	5.0	4.1	5.2	3.4
Occupations in social science, education, government service & religion	7.5	5.3	5.7	4.3	5.2	7.7	4.6	3.2	5.7	5.4	5.4
Occupations in art, culture recreation & sport	2.8	1.5	0.7	2.2	1.8	3.3	1.5	0.5	0.8	1.3	1.4
Sales and service occupations	22.5	22.3	21.4	24.0	22.7	33.2	17.5	15.6	20.6	24.5	18.0
Trades, transport & equipment operators & related occupations	13.9	17.7	17.4	16.9	17.6	14.2	18.1	21.9	16.2	18.6	20.9
Occupations unique to primary industry	2.7	16.2	13.7	13.9	18.2	3.5	19.9	25.9	26.0	10.7	24.3
Occupations unique to processing, manufacturing and utilities	8.1	8.8	9.4	5.4	5.5	5.9	12.9	13.7	10.3	12.5	5.2

Table No. 95F0490XCB1001on.ivt

### Labour Force by Occupation



**Labour Force by Occupation**

	Huron County	South Huron	Bluewater	Central Huron	Goderich	Huron East	Howick	Morris-Turnberry	North Huron	Ashfield Colborne Wawanosh
<b>Labour force 15+</b>	<b>31,755</b>	<b>5,305</b>	<b>3,660</b>	<b>4,255</b>	<b>3,910</b>	<b>5,220</b>	<b>1,905</b>	<b>1,960</b>	<b>2,745</b>	<b>2,790</b>
Occupation N/A	295	35	15	55	75	45	10	15	30	20
<b>All Occupations</b>	<b>31,455</b>	<b>5,270</b>	<b>3,640</b>	<b>4,200</b>	<b>3,835</b>	<b>5,180</b>	<b>1,895</b>	<b>1,945</b>	<b>2,710</b>	<b>2,775</b>
<b>Management occupations</b>	<b>2,860</b>	<b>530</b>	<b>470</b>	<b>345</b>	<b>350</b>	<b>410</b>	<b>115</b>	<b>135</b>	<b>270</b>	<b>225</b>
Senior management occupations	195	20	60	30	25	35	10	10	15	0
Specialists managers	550	105	85	65	75	100	15	20	40	50
Retail trade, food and accommodation services managers	1,140	185	180	160	160	170	50	70	100	65
Other managers	980	215	155	90	95	110	40	45	120	110
<b>Business, finance, administration occupations</b>	<b>3,780</b>	<b>815</b>	<b>500</b>	<b>505</b>	<b>580</b>	<b>510</b>	<b>150</b>	<b>150</b>	<b>295</b>	<b>270</b>
Professional occupations in business & finance	355	105	50	30	25	75	10	10	40	10
Finance & insurance administration occupations	390	100	40	65	55	60	10	15	20	35
Secretaries	575	115	65	75	110	60	10	50	60	35
Administrative & regulatory occupations	395	35	105	40	40	65	15	10	50	30
Clerical supervisors	150	30	35	10	30	25	15	0	0	10
Clerical occupations	1,915	430	210	280	325	230	95	65	130	155
<b>Natural &amp; applied sciences &amp; related occupations</b>	<b>745</b>	<b>85</b>	<b>90</b>	<b>90</b>	<b>170</b>	<b>135</b>	<b>15</b>	<b>30</b>	<b>30</b>	<b>90</b>
Professional occupations in natural & applied sciences	370	50	20	55	110	65	15	15	10	40
Technical occupations related to natural & applied sciences	375	40	65	35	70	75	10	20	20	45
<b>Health occupations</b>	<b>1,485</b>	<b>250</b>	<b>160</b>	<b>280</b>	<b>125</b>	<b>270</b>	<b>95</b>	<b>80</b>	<b>140</b>	<b>95</b>
Professional occupations in health	135	15	30	30	35	0	0	0	15	0
Nurse supervisors & registered nurses	575	120	50	85	30	135	40	40	45	25
Technical & related occupations in health	325	35	30	80	35	45	15	10	60	20

*Continued next page*

*A Collection of Statistical Data for Huron County and its Census Subdivisions*

	Huron County	South Huron	Bluewater	Central Huron	Goderich	Huron East	Howick	Morris-Turnberry	North Huron	Ashfield Colborne Wawanosh
Assisting occupations in support of health services	455	70	50	90	30	85	35	30	20	45
<b>Occupations in social science, education, government service &amp; religion</b>	<b>1,665</b>	<b>300</b>	<b>155</b>	<b>220</b>	<b>295</b>	<b>240</b>	<b>60</b>	<b>110</b>	<b>145</b>	<b>150</b>
Judges, lawyers, psychologists, social workers, ministers of religion, policy & program officers	435	50	45	55	95	75	10	0	40	60
Teachers & professors	850	155	70	120	155	80	35	75	90	60
Paralegals, social services workers & occupations in education & religion	375	90	40	35	45	85	10	30	10	30
<b>Occupations in art, culture recreation &amp; sport</b>	<b>480</b>	<b>35</b>	<b>80</b>	<b>75</b>	<b>125</b>	<b>80</b>	<b>10</b>	<b>15</b>	<b>35</b>	<b>40</b>
Professional occupations in art & culture	200	10	50	45	35	20	0	10	10	20
Technical occupations in art, culture, recreation & sport	280	20	30	30	90	50	0	10	25	20
<b>Sales and service occupations</b>	<b>7,000</b>	<b>1,130</b>	<b>875</b>	<b>955</b>	<b>1,275</b>	<b>905</b>	<b>295</b>	<b>400</b>	<b>665</b>	<b>500</b>
Sales & services supervisors	185	30	10	30	55	15	20	15	0	10
Wholesale, technical, insurance, real estate sales specialists, & retail, wholesale & grain buyers	535	90	60	55	75	60	25	65	60	45
Retail salespersons & sales clerks	1,190	195	125	160	265	130	50	70	85	120
Cashiers	515	70	40	80	140	70	0	0	50	60
Chefs & cooks	580	100	75	70	85	95	15	45	60	30
Occupations in food & beverage services	590	50	95	80	105	100	0	45	85	30
Occupations in protective services	260	20	0	70	60	35	10	10	40	15

*Continued next page*

*A Collection of Statistical Data for Huron County and its Census Subdivisions*

	Huron County	South Huron	Bluewater	Central Huron	Goderich	Huron East	Howick	Morris-Turnberry	North Huron	Ashfield Colborne Wawanosh
Occupations in travel & accommodation, including attendants in recreation & sport	115	10	15	20	20	35	0	0	10	0
Child care & home support workers	745	110	65	75	120	110	70	35	85	70
Sales & service occupations	2,280	460	375	330	340	245	100	115	200	120
<b>Trades, transport &amp; equipment operators &amp; related occupations</b>	<b>5,565</b>	<b>915</b>	<b>615</b>	<b>740</b>	<b>545</b>	<b>935</b>	<b>415</b>	<b>315</b>	<b>505</b>	<b>580</b>
Contractors & supervisors in trades & transportation	255	25	60	20	20	30	25	10	35	25
Construction trades	790	180	110	110	50	115	50	55	55	70
Stationary engineers, power station operators & electrical trades & telecommunications occupations	310	40	50	35	25	70	10	20	45	20
Machinists, metal forming, shaping & erecting occupations	660	150	65	100	30	120	45	30	40	80
Mechanics	865	155	85	95	125	145	40	30	80	110
Other trades	310	60	10	55	35	60	45	10	15	25
Heavy equipment & crane operators	250	30	30	55	30	50	10	10	25	15
Transportation equipment operators & related workers, excluding labourers	1,295	180	125	170	115	190	150	105	145	115
Trades helpers, construction & transportation labourers & related occupations	820	105	80	95	120	150	50	45	60	115
<b>Occupations unique to primary industry</b>	<b>5,110</b>	<b>720</b>	<b>505</b>	<b>765</b>	<b>135</b>	<b>1030</b>	<b>490</b>	<b>505</b>	<b>290</b>	<b>675</b>
Occupations unique to agriculture excluding labourers	4,645	650	475	685	30	980	445	465	270	640

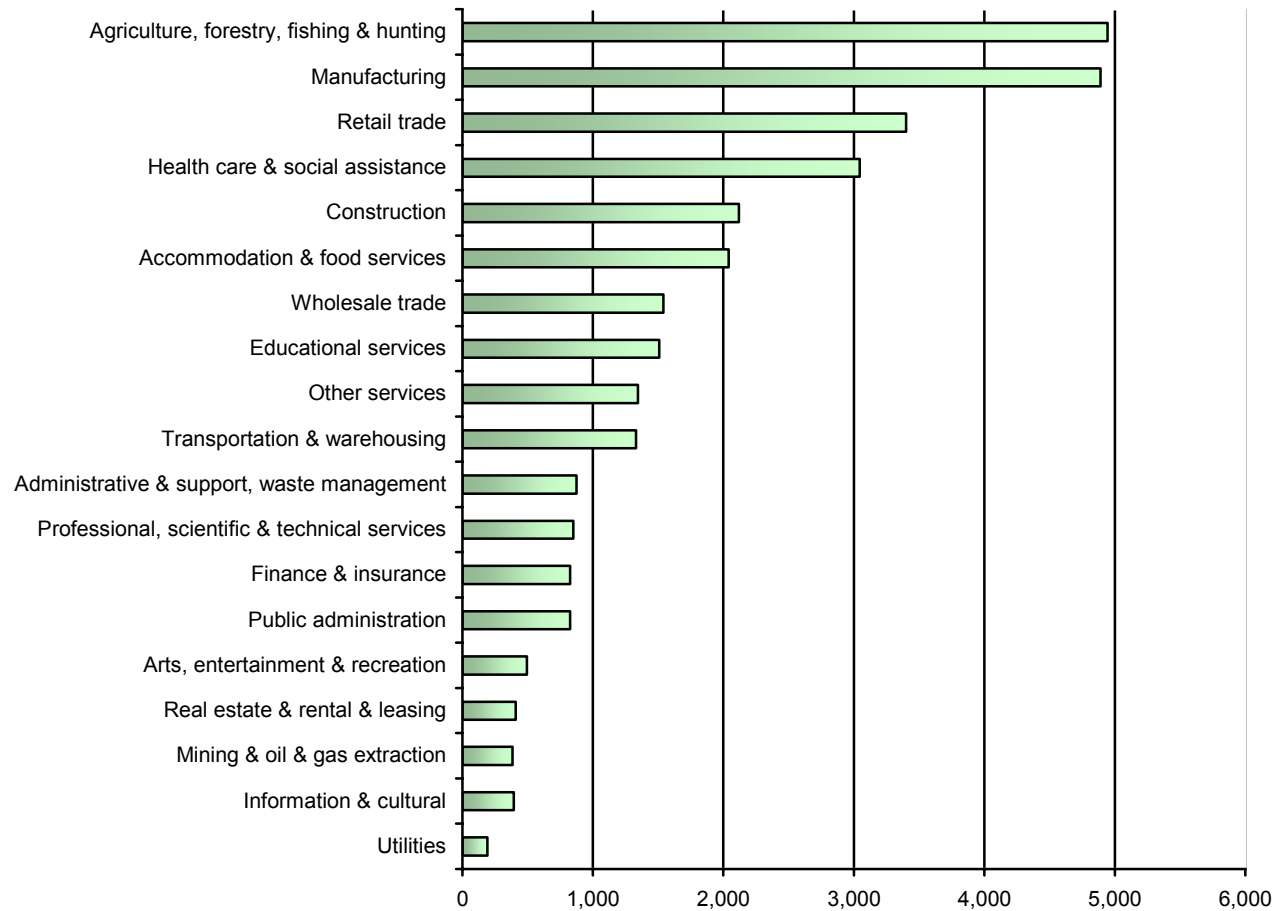
*Continued next page*

*A Collection of Statistical Data for Huron County and its Census Subdivisions*

	<b>Huron County</b>	<b>South Huron</b>	<b>Bluewater</b>	<b>Central Huron</b>	<b>Goderich</b>	<b>Huron East</b>	<b>Howick</b>	<b>Morris- Turnberry</b>	<b>North Huron</b>	<b>Ashfield Colborne Wawanosh</b>
Occupations unique to forestry occupations, mining, oil and gas extraction & fishing, excluding labourers	130	20	0	20	40	10	0	10	0	20
Primary production labourers	340	50	20	55	65	35	40	25	20	20
<b>Occupations unique to processing, manufacturing and utilities</b>	<b>2,765</b>	<b>495</b>	<b>195</b>	<b>230</b>	<b>225</b>	<b>670</b>	<b>260</b>	<b>200</b>	<b>340</b>	<b>145</b>
Supervisors in Manufacturing	240	50	30	25	10	35	25	40	20	15
Machine operators in manufacturing	965	150	55	95	100	230	45	100	160	40
Assemblers in manufacturing	705	125	55	60	55	200	75	15	45	75
Labourers in processing, manufacturing & utilities	855	170	65	50	65	205	115	50	120	20

Source: Statistics Canada 2001 Census Table No. 95F0490XCB01001on.ivt

### LABOUR FORCE BY INDUSTRY – HURON COUNTY



Source: Statistics Canada 2001 Census, Table 95F0490XCB01001.ivt

**Labour Force by Industry (% of People)**

	<b>Labour Force by Industry Percent Distribution - Huron County</b>										
<b>Labour Force 15yrs+</b>	<b>Ontario 6,086,820</b>	<b>Huron County 58,700</b>	<b>South Huron 9,875</b>	<b>Bluewater 6,770</b>	<b>Central Huron 7,750</b>	<b>Goderich 7,405</b>	<b>Huron East 9,440</b>	<b>Howick 3,745</b>	<b>Morris- Turnberry 3,350</b>	<b>North Huron 4,965</b>	<b>Ashfield Colborne Wawanosh 5,400</b>
<b>Industrial Grouping</b>	<b>%</b>	<b>%</b>	<b>%</b>	<b>%</b>	<b>%</b>	<b>%</b>	<b>%</b>	<b>%</b>	<b>%</b>	<b>%</b>	<b>%</b>
Agriculture, forestry, fishing & hunting	2.0	15.7	12.6	13.6	17.1	1.0	20.4	25.3	28.8	9.2	24.1
Mining and oil & gas extraction	0.3	1.2	0.2	0.3	2.6	3.9	0.4	0.5	0.5	0.4	2.5
Utilities	0.8	0.6	0.5	0.5	0.7	0.5	0.5	0.5	1.0	0.4	1.3
Construction	5.5	6.7	7.5	8.8	6.2	3.5	6.7	6.9	5.4	8.1	7.7
Manufacturing	16.2	15.5	19.5	9.5	9.9	10.6	20.5	21.4	16.5	20.6	12.8
Wholesale trade	4.6	4.9	4.2	8.8	5.0	5.3	4.6	4.5	2.6	4.6	3.2
Retail trade	11.0	10.8	10.0	9.5	9.3	19.4	9.9	7.9	9.3	10.1	10.1
Transportation & warehousing	4.6	4.2	3.2	5.1	4.6	3.7	3.3	4.7	5.1	5.3	4.7
Information & cultural industries	2.8	1.3	0.9	2.5	1.1	1.3	1.1	1.6	0.0	2.6	0.5
Finance & insurance	4.8	2.6	3.1	3.4	2.4	3.7	1.7	1.3	2.1	2.2	2.7
Real estate & rental & leasing	1.8	1.3	1.0	1.9	1.0	2.9	0.9	0.0	1.3	1.3	0.9
Professional, scientific & technical services	7.0	2.7	3.3	2.3	3.7	3.1	2.6	1.3	1.5	1.7	3.1
Management of companies & enterprises	0.1	0.1	0.2	0.0	0.5	0.0	0.0	0.0	0.0	0.0	0.0
Administrative & support, waste management & remediation	4.2	2.8	4.9	1.4	3.0	3.0	1.6	2.4	2.6	2.4	2.7
Educational services	6.1	4.8	5.6	4.3	5.6	5.1	3.9	4.2	4.4	4.8	5.0
Health care & social assistance	8.7	9.7	9.4	9.7	11.2	10.8	9.7	9.0	8.7	9.6	7.6
Arts, entertainment & recreation	2.0	1.6	1.4	1.4	2.6	2.5	1.9	0.0	0.0	1.1	0.9
Accommodation & food services	6.2	6.5	6.4	8.5	7.3	9.9	4.6	2.1	5.1	7.6	4.3
Other services (except public administration)	4.5	4.3	4.1	6.0	4.6	4.2	4.0	4.0	3.6	4.4	3.2
Public administration	5.1	2.6	2.1	2.6	1.3	5.7	1.9	2.4	1.3	3.9	2.5

Source: Statistics Canada 2001 Census, Table No. 95F0490XCB01001on.ivt

**Labour Force by Industry (# of People)**

	Huron County	South Huron	Bluewater	Central Huron	Goderich	Huron East	Howick	Morris-Turnberry	North Huron	Ashfield Colborne Wawanosh
<b>Labour force 15+</b>	31,755	5,300	3,655	4,255	3,915	5,225	1,905	1,960	2,745	2,790
Industry N/A	295	35	15	55	75	45	10	10	30	20
<b>All Industries</b>	<b>31,460</b>	<b>5,275</b>	<b>3,645</b>	<b>4,200</b>	<b>3,835</b>	<b>5,180</b>	<b>1,895</b>	<b>1,945</b>	<b>2,715</b>	<b>2,775</b>
Agriculture, forestry, fishing & hunting	4,945	665	495	720	40	1055	480	560	250	670
Mining and oil & gas extraction	385	10	10	110	150	20	10	10	10	70
Utilities	190	25	20	30	20	25	10	20	10	35
Construction	2,120	395	320	260	135	345	130	105	220	215
Manufacturing	4,890	1,030	345	415	405	1,060	405	320	560	355
Wholesale trade	1,540	220	320	210	205	240	85	50	125	90
Retail trade	3,400	525	345	390	745	515	150	180	275	280
Transportation & warehousing	1,330	170	185	195	140	170	90	100	145	130
Information & cultural industries	395	45	90	45	50	55	30	0	70	15
Finance & insurance	825	165	125	100	140	90	25	40	60	75
Real estate & rental & leasing	410	55	70	40	110	45	0	25	35	25
Professional, scientific & technical services	850	175	85	155	120	135	25	30	45	85
Management of companies & enterprises	35	10	0	20	0	0	0	0	0	0
Administrative & support, waste management & remediation	875	260	50	125	115	85	45	50	65	75
Educational services	1,510	295	155	235	195	200	80	85	130	140
Health care & social assistance	3,045	495	355	470	415	500	170	170	260	210
Arts, entertainment & recreation	495	75	50	110	95	100	0	0	30	25
Accommodation & food services	2,040	335	310	305	380	240	40	100	205	120
Other services (except public administration)	1,345	215	220	195	160	205	75	70	120	90
Public administration	825	110	95	55	220	100	45	25	105	70

Source: Statistics Canada 2001 Census, Table No. 95F0490XCB01001on.ivt

### Level of Self Employment

Population	Huron County 58,700	South Huron 9,875	Bluewater 6,770	Central Huron 7,750	Goderich 7,405	Huron East 9,440	Howick 3,745	Morris-Turnberry 3,350	North Huron 4,965	Ashfield Colborne Wawanosh 5,400
Total labour force 15 years+	31,750	5,305	3,655	4,255	3,910	5,225	1,905	1,960	2,745	2,790
Percent Self Employment	19.9%	18.4%	23.1%	23.2%	10.9%	18.5%	24.7%	26.2%	17.3%	23.5%
Total Self Employed	6,250	970	840	975	420	955	470	510	470	650
Self-employed (incorporated)	1,345	235	215	305	100	200	65	80	95	60
Without paid help	515	85	70	120	10	95	35	30	50	20
With paid help	830	155	140	185	85	100	25	50	45	45
Self-employed (unincorporated)	4,905	735	625	670	320	755	405	430	375	590
Without paid help	3,525	480	510	455	190	515	280	370	265	455
With paid help	1,380	260	120	215	130	235	120	65	105	135
Male Self-Employed	4,240	690	575	610	210	680	350	360	315	440
Female Self-Employed	2,010	285	270	360	210	280	110	155	145	210

Source: Statistics Canada 2001 Census, Table No. 95F0490XCB01001on.ivt

See graph on page 33.

**Education**

<b>Huron County by School Attendance</b>										
	<b>Huron County</b>	<b>South Huron</b>	<b>Bluewater</b>	<b>Central Huron</b>	<b>Goderich</b>	<b>Huron East</b>	<b>Howick</b>	<b>Morris-Turnberry</b>	<b>North Huron</b>	<b>Ashfield Colborne Wawanosh</b>
<b>Total pop 15-24 years by School attendance</b>	7,995	1,295	865	1,045	965	1,385	520	485	755	685
<b>Not attending school</b>	3,585	535	290	505	390	625	370	240	330	300
<b>Attending school FT.</b>	4,110	685	575	520	550	725	145	210	345	355
<b>Attending school PT.</b>	300	70	10	20	25	35	0	40	75	30

File: 95F0418XCB01006on

<b>Huron County by Highest Level of Education Percent of Population Age 20+</b>										
<b>Total pop 20+ by highest schooling level</b>	<b>Huron County</b>	<b>South Huron</b>	<b>Bluewater</b>	<b>Central Huron</b>	<b>Goderich</b>	<b>Huron East</b>	<b>Howick</b>	<b>Morris-Turnberry</b>	<b>North Huron</b>	<b>Ashfield Colborne Wawanosh</b>
<b>(%) Percent</b>	<b>42,000 (%)</b>	<b>7,300 (%)</b>	<b>4,940 (%)</b>	<b>5,705 (%)</b>	<b>5,590 (%)</b>	<b>6,465 (%)</b>	<b>2,430 (%)</b>	<b>2,240 (%)</b>	<b>3,595 (%)</b>	<b>3,735 (%)</b>
<b>Less than grade 9</b>	<b>11.0</b>	<b>9.2</b>	<b>10.1</b>	<b>9.7</b>	<b>8.8</b>	<b>11.1</b>	<b>21.2</b>	<b>16.1</b>	<b>9.2</b>	<b>13.0</b>
<b>Grades 9 to 13</b>	<b>40.8</b>	<b>47.1</b>	<b>39.2</b>	<b>40.1</b>	<b>34.3</b>	<b>41.9</b>	<b>43.4</b>	<b>39.3</b>	<b>44.2</b>	<b>35.2</b>
<b>Without H/S grad. cert.</b>	59	63	54	58	55	62	64	64	57	59
<b>With H/S grad. cert.</b>	41	37	46	42	45	38	36	36	43	41
<b>Trades cert. or diploma</b>	<b>13.6</b>	<b>11.0</b>	<b>14.0</b>	<b>15.9</b>	<b>14.1</b>	<b>12.5</b>	<b>12.8</b>	<b>12.9</b>	<b>13.2</b>	<b>17.0</b>
<b>College</b>	<b>23.0</b>	<b>22.3</b>	<b>24.3</b>	<b>22.3</b>	<b>25.6</b>	<b>24.1</b>	<b>15.2</b>	<b>21.7</b>	<b>24.6</b>	<b>22.4</b>
<b>Without cert/diploma</b>	25	25	25	25	28	25	22	26	19	25
<b>With cert. or diploma</b>	75	75	75	75	71	75	80	74	81	75
<b>University</b>	<b>11.6</b>	<b>10.5</b>	<b>12.6</b>	<b>11.9</b>	<b>17.4</b>	<b>10.4</b>	<b>7.6</b>	<b>9.6</b>	<b>8.8</b>	<b>12.6</b>

File:95R0491XCB1001

See graph on page 33.

*A Collection of Statistical Data for Huron County and its Census Subdivisions*

	<b>Huron County by Highest Level of Schooling Number of People</b>									
<b>Total population by highest level of schooling age 20+</b>	<b>Huron County 42,000</b>	<b>South Huron 7,300</b>	<b>Bluewater 4,940</b>	<b>Central Huron 5,705</b>	<b>Goderich 5,590</b>	<b>Huron East 6,465</b>	<b>Howick 2,430</b>	<b>Morris-Turnberry 2,240</b>	<b>North Huron 3,595</b>	<b>Ashfield Colborne Wawanosh 3,735</b>
Less than High School Graduation	14,795	2,840	1,540	1,880	1,535	2,405	1,185	925	1,235	1,265
High School Certificate Only	6,945	1,270	895	965	870	1,030	385	320	685	535
Some Post Secondary School.	3,945	630	540	540	730	620	110	170	260	340
Trade Certificate or Diploma	5,705	800	690	905	790	805	310	290	475	635
College Certificate or Diploma	7,240	1,215	900	950	1,020	1,165	295	360	715	625
University Certificate or Diploma below Bachelor's Degree	530	50	105	65	105	60	10	35	35	60
University Degree	3,365	550	380	460	650	445	150	175	225	335
Bachelor's Degree	2,185	350	200	310	475	305	95	90	160	210
University Certificate above Bachelor's Degree	570	135	85	55	90	50	40	35	20	50
Master's Degree	455	50	75	70	40	80	15	50	30	55
Earned Doctorate	35	10	0	0	20	0	0	0	0	10

File: 95F0491XCB1001on

	<b>Comparison – Highest Level of Education Canada, Ontario, Huron County</b>						
	<b>Less than High School Graduation</b>	<b>High School Graduation Only</b>	<b>Some Post Secondary Education</b>	<b>Trade Certificate or Diploma</b>	<b>College Certificate or Diploma</b>	<b>Bachelor's Degree</b>	<b>University Certificate above Bachelor's Degree</b>
<b>Canada</b>	31.3%	14.1%	10.8%	10.9%	15.0%	10.6%	4.8%
<b>Ontario</b>	29.7%	14.4%	11.2%	9.4%	15.7%	11.6%	5.9%
<b>Huron County</b>	<b>39.0%</b>	<b>16.7%</b>	<b>8.0%</b>	<b>12.3%</b>	<b>15.6%</b>	<b>4.9%</b>	<b>1.2%</b>

File: 95F0418XCB01006on

## Average Employment Income

Overall, average employment incomes in Huron County are fairly consistent across the municipalities. At \$26,847, the average employment income for Huron residents is 23% below the provincial average.

### Notes:

- Worked full year, full-time refers to people who worked between 49 and 52 weeks in 2000, mostly full-time.
- Worked part year or part-time refers to people who worked less than 49 weeks or worked mostly part-time in 2000.

	Ontario	Huron County	South Huron	Bluewater	Central Huron	Goderich	Huron East	Howick	Morris-Turnberry	North Huron	Ashfield Colborne Wawanosh
<b>Total pop 15+ with employment income &amp; work activity</b>	6,319,530	32,700	5,540	3,805	4,445	3,980	5,300	1,950	2,015	2,855	2,810
<b>Average employment income \$</b>	\$35,185	\$26,847	\$28,452	\$28,358	\$25,726	\$27,018	\$25,790	\$25,386	\$26,951	\$26,620	\$26,335
<b>Worked full year, full-time (# of People)</b>	3,480,665	17,750	3,230	1,965	2,230	2,025	2,830	1,140	1,170	1,585	1,575
<b>Average employment income \$</b>	\$47,247	\$36,094	\$37,931	\$36,994	\$35,242	\$37,644	\$35,569	\$32,812	\$34,054	\$35,821	\$35,509
<b>Worked part year or part-time (# of People)</b>	2,684,445	14,030	2,120	1,745	2,050	1,845	2,290	770	815	1,205	1,200
<b>Average employment income \$</b>	\$20,816	\$16,318	\$15,479	\$19,488	\$16,927	\$16,242	\$15,248	\$15,718	\$17,017	\$15,680	\$14,859

Source: Statistics Canada 2001 Census  
Table No. 95F0491XCB01001on.ivt

See graph on page 32.

## Distribution of Income for Huron County

Data Source: SAAD Time Series 1994-2000 NID 5C.

Year	Percent of Population – Huron County						Comparison		
	1995	1996	1997	1998	1999	2000	Huron 2000	Ontario 2000	Canada 2000
Total, all Persons - Less than \$5,000	11.1	11.3	11.0	10.6	10.4	9.8	9.8	11.3	11.3
Total, all Persons - \$5,000 and over	88.9	88.7	89.0	89.4	89.6	90.2	90.2	88.7	88.7
Total, all Persons - \$10,000 and over	75.3	75.4	75.8	76.7	77.7	78.6	78.6	77.9	76.6
Total, all Persons - \$15,000 and over	60.1	60.7	60.8	62.1	63.9	65.5	65.5	66.3	63.4
Total, all Persons - \$20,000 and over	47.0	48.0	48.6	49.7	51.6	53.3	53.3	56.6	52.9
Total, all Persons - \$25,000 and over	36.3	37.6	38.6	39.7	41.6	43.5	43.5	48.5	44.4
Total, all Persons - \$35,000 and over	20.1	20.7	22.0	23.0	24.3	26.2	26.2	33.9	29.8
Total, all Persons - \$50,000 and over	7.6	8.2	8.9	9.8	10.6	11.7	11.7	18.9	15.8
Total, all Persons - \$75,000 and over	1.6	1.9	2.1	2.4	2.6	3.1	3.1	6.8	5.4
Total, all Persons - \$100,000 and over	0.7	0.8	0.9	1.0	1.0	1.3	1.3	3.2	2.4
Total, all Persons - \$150,000 and over	0.3	0.3	0.4	0.5	0.5	0.5	0.5	1.3	1.0
Total, all Persons - \$200,000 and over	0.2	0.3	0.4	0.5	0.5	0.5	0.5	0.8	0.6

Huron County (Discrete Measurement)

Year	1995	2000	Percent of Population	Actual Change	Percent Change
Total, all Persons - Less than \$5,000	4,530	4,130	9.8	-400	-1.0
Total, all Persons - between \$5,000 and \$9,999	5,510	4,870	11.5	-640	-1.6
Total, all Persons - between \$10,000 and \$14,999	6,190	5,550	13.2	-640	-1.6
Total, all Persons - between \$15,000 and \$19,999	5,320	5,140	12.2	-180	-0.4
Total, all Persons - between \$20,000 and \$24,999	4,360	4,160	9.9	-200	-0.5
Total, all Persons - between \$25,000 and \$34,999	6,600	7,280	17.3	680	1.7
Total, all Persons - between \$35,000 and \$49,999	5,070	6,140	14.5	1,070	2.6
Total, all Persons - between \$50,000 and \$74,999	2,440	3,620	8.6	1,180	2.9
Total, all Persons - between \$75,000 and \$99,999	360	750	1.8	390	1.0
Total, all Persons - between \$100,000 and \$149,999	180	320	0.8	140	0.3
Total, all Persons - between \$150,000 and \$199,999	60	90	0.2	30	0.1
Total, all Persons - between \$200,000 and \$249,999	20	50	0.1	30	0.1
Total, all Persons - \$250,000 and over	30	90	0.2	60	0.1
Total, all Persons	40,670	42,200	100	1,530	3.8%

**Huron County – Reported Sources of Income**

Year	1995	1996	1997	1998	1999	2000
Number of Tax Filers	40,670	41,090	41,390	41,690	41,930	42,200
<b>Employment Insurance</b>						
Number of males	2,150	2,070	1,790	1,670	1,550	1,490
Number of females	1,800	1,700	1,580	1,430	1,410	1,360
Number, both genders	3,960	3,770	3,370	3,100	2,960	2,840
<b>Old Age Security</b>						
Number of males	4,000	4,050	4,010	4,040	4,010	4,070
Number of females	5,130	5,240	5,260	5,310	5,140	5,170
Number, both genders	9,130	9,280	9,260	9,350	9,150	9,240
<b>Canada Pension</b>						
Number of males	4,980	5,050	4,990	5,020	5,090	5,140
Number of females	5,000	5,170	5,310	5,470	5,610	5,730
Number, both genders	9,980	10,220	10,300	10,490	10,710	10,870
<b>Canada Child Tax Benefit -</b>						
Number of males	230	210	200	180	190	210
Number of females	6,380	6,350	6,330	6,180	5,950	6,010
Number, both genders	6,600	6,560	6,530	6,360	6,130	6,210
<b>Workers' Compensation</b>						
Number of males	930	850	850	860	870	830
Number of females	380	340	350	380	400	400
Number, both genders	1,310	1,190	1,210	1,240	1,270	1,230
<b>Social Assistance</b>						
Number of males	1,140	1,030	990	910	830	700
Number of females	1,430	1,270	1,270	1,210	1,100	950
Number, both genders	2,560	2,300	2,260	2,120	1,920	1,650
Source: SAAD TS 1994-2000 NID04						

Note: totals may not add due to rounding

- Unemployment Insurance Benefits:**  
includes all payments regardless of reason (job loss, maternity leave, sickness, etc.).
- Old Age Security Benefits:**  
includes all benefits reported for the reference year (excluding guaranteed income supplements).
- Workers Compensation:**  
Compensation received under workers' compensation in respect of an injury, disability or death. This value is reported on line 144 of the personal income tax return.
- Social Assistance:**  
includes payments made in the year on the basis of a means, needs or income test (whether made by an organized charity or under a government program). The value is reported on line 145 of the personal income tax return.

**Family Type and Median Income (Huron County)**

Year	1993	1994	1995	1996	1997	1998	1999
<b>HUSBAND-WIFE FAMILIES (Total Number)</b>	13,930	14,030	14,000	14,150	14,110	14,070	14,020
With 0 Children	\$34,700	\$35,900	\$37,300	\$38,800	\$39,700	\$41,200	\$42,900
With 1 Child	\$49,400	\$50,300	\$51,800	\$53,000	\$54,800	\$56,900	\$59,200
With 2 Children	\$52,100	\$53,800	\$54,800	\$55,900	\$58,100	\$60,100	\$62,400
With 3+ Children	\$49,500	\$49,300	\$52,200	\$52,600	\$55,100	\$57,700	\$59,900
All Husband-Wife Families ( Median Income)	\$43,300	\$44,000	\$45,700	\$46,500	\$48,300	\$49,900	\$51,900
<b>LONE PARENT FAMILIES (Total Number)</b>	1,630	1,680	1,740	1,720	1,720	1,710	1,820
With 1 Child	\$22,200	\$22,900	\$23,600	\$22,200	\$23,500	\$25,300	\$25,500
With 2 Children	\$21,400	\$21,700	\$21,800	\$22,800	\$23,300	\$25,300	\$24,800
With 3+ Children	\$24,900	\$26,600	\$25,500	\$23,800	\$24,500	\$24,400	\$27,100
<b>Male Lone Parent Families (Total Number)</b>	290	310	330	320	320	310	340
Median Income	\$30,700	\$33,100	\$34,600	\$33,200	\$35,000	\$36,500	\$38,900
<b>Female Lone Parent (Total Number)</b>	1,340	1,370	1,400	1,400	1,400	1,400	1,490
Median Income	\$21,200	\$21,900	\$22,000	\$21,500	\$21,800	\$23,300	\$23,200
<b>Percentage of Tax filers that are Lone Parent</b>							
Huron County			4.3%	4.2%	4.2%	4.1%	4.3%
Ontario			5.8%	5.7%	5.7%	5.8%	6.0%
Canada			5.9%	5.8%	5.8%	5.9%	6.0%

Note: totals may not add due to rounding  
 Data Source: SAAD Time Series 1993-1999 FAM03A and FAM03B

<b>Total Population by Sex and Age Group</b>										
	<b>Huron County</b>	<b>South Huron</b>	<b>Bluewater</b>	<b>Central Huron</b>	<b>Goderich</b>	<b>Huron East</b>	<b>Howick</b>	<b>Morris-Turnberry</b>	<b>North Huron</b>	<b>Ashfield Colborne Wawanosh</b>
Population, 1996 – (100% Data)	60,220	10,229	6,874	7,862	7,553	9,937	3,685	3,504	5,099	5,477
Population, 2001 – (100% Data)	59,701	10,019	6,919	7,806	7,604	9,680	3,779	3,499	4,984	5,411
Population percentage change, 1996-2001	-0.9	-2.1	0.7	-0.7	0.7	-2.6	2.6	-0.1	-2.3	-1.2
Land area in square kilometres, 2001	3,407.62	425.35	416.99	447.6	7.91	669.16	287.43	376.9	178.52	597.76
Total population by sex and age groups – (100% Data)	59,700	10,020	6,915	7,805	7,605	9,680	3,780	3,495	4,985	5,410

	<b>Huron County</b>	<b>South Huron</b>	<b>Bluewater</b>	<b>Central Huron</b>	<b>Goderich</b>	<b>Huron East</b>	<b>Howick</b>	<b>Morris-Turnberry</b>	<b>North Huron</b>	<b>Ashfield Colborne Wawanosh</b>
Labour Force Age 15+	47,625	8,175	5,635	6,385	6,330	7,470	2,705	2,725	4,005	4,185

<b>Total Population - Huron County Both Sexes By Five Year Age Clusters</b>										
<b>Age</b>	<b>Huron County</b>	<b>South Huron</b>	<b>Bluewater</b>	<b>Central Huron</b>	<b>Goderich</b>	<b>Huron East</b>	<b>Howick</b>	<b>Morris- Turnberry</b>	<b>North Huron</b>	<b>Ashfield Colborne Wawanosh</b>
<b>Both Sexes Total</b>	59,700	10,020	6,915	7,805	7,605	9,680	3,780	3,495	4,985	5,410
0-4	3,475	495	370	395	405	650	335	230	280	330
5-9	4,100	635	455	490	405	745	360	245	325	435
10-14	4,515	695	470	555	480	795	380	305	370	465
15-19	4,640	745	540	630	530	780	285	290	400	430
20-24	3,375	545	325	430	425	605	215	210	350	260
25-29	2,700	465	275	350	360	455	220	145	230	200
30-34	3,105	530	350	375	420	540	185	190	265	250
35-39	4,140	720	495	485	485	685	280	275	320	375
40-44	4,520	825	520	580	580	765	275	210	365	390
45-49	4,385	695	510	595	610	705	210	250	400	405
50-54	4,120	695	505	615	560	575	230	240	345	365
55-59	3,295	530	435	520	410	480	185	180	275	280
60-64	2,955	480	405	445	370	400	150	150	240	320
65-69	2,665	465	355	375	325	365	140	120	220	300
70-74	2,770	525	345	375	385	350	130	150	215	300
75-79	2,120	450	225	305	335	300	80	105	155	170
80-84	1,630	315	185	185	285	255	70	100	145	95
85+	1,205	190	165	120	250	210	50	110	80	45

*A Collection of Statistical Data for Huron County and its Census Subdivisions*

Total Male Population - Huron County By Five Year Age Clusters										
Age	Huron County	South Huron	Bluewater	Central Huron	Goderich	Huron East	Howick	Morris-Turnberry	North Huron	Ashfield Colborne Wawanosh
Male, total	29,420	4,845	3,460	3,845	3,610	4,805	1,865	1,765	2,455	2,770
0-4	1,760	235	185	195	215	340	155	115	150	180
5-9	2,070	300	230	240	220	395	175	125	175	210
10-14	2,320	350	245	275	240	420	180	165	185	255
15-19	2,350	370	290	325	265	385	135	160	205	205
20-24	1,730	275	175	215	215	315	110	100	175	140
25-29	1,380	230	155	170	175	225	120	85	125	100
30-34	1,530	275	155	190	215	265	90	80	130	125
35-39	2,025	355	255	240	210	345	150	145	145	175
40-44	2,285	420	270	285	285	385	150	105	175	205
45-49	2,240	360	255	300	295	360	105	125	210	225
50-54	2,105	350	260	305	280	320	115	130	170	180
55-59	1,615	255	205	260	190	240	90	95	130	145
60-64	1,435	230	195	210	185	190	65	85	125	155
65-69	1,325	225	195	180	140	170	75	65	105	165
70-74	1,310	225	165	205	175	165	65	70	95	150
75-79	925	190	115	130	130	130	40	50	60	80
80-84	655	130	75	75	115	90	30	35	55	55
85+	370	65	40	45	65	55	10	40	35	15

Total Female Population - Huron County By Five Year Age Clusters										
Age	Huron County	South Huron	Bluewater	Central Huron	Goderich	Huron East	Howick	Morris- Turnberry	North Huron	Ashfield Colborne Wawanosh
Female, total	30,280	5,175	3,460	3,960	3,990	4,870	1,915	1,735	2,530	2,640
0-4	1,715	260	185	200	190	310	180	115	130	150
5-9	2,030	335	225	250	185	350	185	120	150	225
10-14	2,195	345	225	280	240	375	200	140	185	210
15-19	2,290	375	250	305	265	395	150	130	195	225
20-24	1,645	270	150	215	210	290	105	110	175	120
25-29	1,320	235	120	180	185	230	100	60	105	100
30-34	1,575	255	195	185	205	275	95	110	135	125
35-39	2,115	365	240	245	275	340	130	130	175	200
40-44	2,235	405	250	295	295	380	125	105	190	185
45-49	2,145	335	255	295	315	345	105	125	190	180
50-54	2,015	345	245	310	280	255	115	110	175	185
55-59	1,680	275	230	260	220	240	95	85	145	135
60-64	1,520	250	210	235	185	210	85	65	115	165
65-69	1,340	240	160	195	185	195	65	55	115	135
70-74	1,460	300	180	170	210	185	65	80	120	150
75-79	1,195	260	110	175	205	170	40	55	95	90
80-84	975	185	110	110	170	165	40	65	90	40
85+	835	125	125	75	185	155	40	70	45	30

*A Collection of Statistical Data for Huron County and its Census Subdivisions*

<b>Population – Huron County By Single Year</b>										
<b>Both Sexes Single Year</b>	<b>Huron County 58,700</b>	<b>South Huron 9,875</b>	<b>Bluewater 6,770</b>	<b>Central Huron 7,750</b>	<b>Goderich 7,405</b>	<b>Huron East 9,440</b>	<b>Howick 3,745</b>	<b>Morris- Turnberry 3,350</b>	<b>North Huron 4,965</b>	<b>Ashfield Colborne Wawanosh 5,400</b>
<b>0-4</b>	<b>3,480</b>	<b>495</b>	<b>370</b>	<b>390</b>	<b>400</b>	<b>645</b>	<b>335</b>	<b>230</b>	<b>280</b>	<b>335</b>
Under 1 yr.	670	95	55	90	70	120	65	45	60	65
1	600	75	70	70	65	115	60	45	45	55
2	745	105	80	90	85	130	70	50	60	75
3	715	90	90	70	90	150	70	45	50	65
4	750	120	75	75	90	130	60	45	70	80
<b>5-9 yrs.</b>	<b>4,095</b>	<b>635</b>	<b>450</b>	<b>485</b>	<b>405</b>	<b>745</b>	<b>355</b>	<b>245</b>	<b>325</b>	<b>430</b>
5	775	130	80	90	75	150	70	45	50	80
6	795	120	90	95	75	145	75	50	65	80
7	795	125	80	90	85	150	70	45	70	85
8	815	125	110	100	80	140	70	45	65	90
9	920	135	95	115	100	165	80	65	80	95
<b>10-14 yrs.</b>	<b>4,510</b>	<b>705</b>	<b>465</b>	<b>550</b>	<b>480</b>	<b>800</b>	<b>375</b>	<b>305</b>	<b>365</b>	<b>465</b>
10	890	140	90	105	105	155	85	55	60	95
11	935	130	90	110	90	165	80	60	85	110
12	875	140	95	110	85	160	65	65	85	80
13	895	145	90	115	100	155	75	65	70	85
14	920	150	100	105	105	165	65	60	70	95
<b>15-19 yrs.</b>	<b>4,630</b>	<b>745</b>	<b>540</b>	<b>630</b>	<b>535</b>	<b>780</b>	<b>290</b>	<b>290</b>	<b>400</b>	<b>430</b>
15	990	165	115	140	105	170	70	50	75	90
16	915	145	100	125	105	155	55	60	80	95
17	935	140	115	125	95	170	55	65	75	85
18	930	140	105	140	110	140	60	65	85	80
19	860	155	110	100	110	140	50	45	80	75
<b>20-24 yrs.</b>	<b>3,380</b>	<b>545</b>	<b>325</b>	<b>435</b>	<b>425</b>	<b>610</b>	<b>215</b>	<b>210</b>	<b>355</b>	<b>265</b>
20	760	100	85	105	95	145	55	50	75	60
21	755	105	80	105	80	140	45	55	75	70
22	680	120	55	90	85	125	35	40	85	50
23	595	105	60	60	80	110	45	30	55	40
24	590	110	50	70	85	95	35	35	60	45

*A Collection of Statistical Data for Huron County and its Census Subdivisions*

Both Sexes Single Year	Huron County 58,700	South Huron 9,875	Bluewater 6,770	Central Huron 7,750	Goderich 7,405	Huron East 9,440	Howick 3,745	Morris- Turnberry 3,350	North Huron 4,965	Ashfield Colborne Wawanosh 5,400
<b>25-29 yrs.</b>	<b>2,700</b>	<b>465</b>	<b>275</b>	<b>345</b>	<b>365</b>	<b>455</b>	<b>215</b>	<b>150</b>	<b>230</b>	<b>200</b>
25	550	90	65	60	85	90	40	25	40	40
26	570	110	55	65	80	95	45	35	45	40
27	520	90	50	70	70	85	45	25	45	50
28	535	75	55	80	65	95	45	30	55	40
29	530	100	45	75	75	85	45	35	45	35
<b>30-34 yrs.</b>	<b>3,105</b>	<b>530</b>	<b>350</b>	<b>370</b>	<b>420</b>	<b>540</b>	<b>190</b>	<b>190</b>	<b>260</b>	<b>250</b>
30	655	120	65	80	80	115	45	40	65	50
31	650	105	65	80	90	130	25	40	55	60
32	555	105	55	70	70	100	45	25	50	40
33	610	85	85	70	95	95	30	40	45	55
34	630	105	75	75	85	100	50	45	50	55
<b>35-39 yrs.</b>	<b>4,135</b>	<b>720</b>	<b>495</b>	<b>485</b>	<b>485</b>	<b>690</b>	<b>285</b>	<b>275</b>	<b>320</b>	<b>375</b>
35	715	120	85	95	85	115	50	45	50	65
36	820	130	105	85	95	140	55	50	70	85
37	840	155	95	105	95	125	60	60	65	80
38	860	140	95	105	95	150	50	70	70	85
39	900	170	110	95	105	165	65	55	65	65
<b>40-44 yrs.</b>	<b>4,515</b>	<b>825</b>	<b>520</b>	<b>580</b>	<b>575</b>	<b>765</b>	<b>275</b>	<b>210</b>	<b>370</b>	<b>390</b>
40	905	175	110	115	110	165	45	35	75	70
41	915	155	105	115	125	150	50	55	75	80
42	930	165	100	135	100	155	65	35	80	90
43	880	175	100	90	125	150	60	35	65	75
44	885	155	100	130	115	140	60	45	65	75
<b>45-49 yrs.</b>	<b>4,385</b>	<b>695</b>	<b>505</b>	<b>600</b>	<b>610</b>	<b>710</b>	<b>215</b>	<b>255</b>	<b>400</b>	<b>400</b>
45	855	150	75	120	120	150	35	60	80	60
46	905	155	105	125	125	155	50	35	70	95
47	915	135	115	120	135	145	45	60	85	75
48	865	120	100	120	120	140	35	55	75	90
49	850	140	105	115	115	120	45	45	90	85

Continued on next page.

*A Collection of Statistical Data for Huron County and its Census Subdivisions*

Both Sexes Single Year	Huron County 58,700	South Huron 9,875	Bluewater 6,770	Central Huron 7,750	Goderich 7,405	Huron East 9,440	Howick 3,745	Morris- Turnberry 3,350	North Huron 4,965	Ashfield Colborne Wawanosh 5,400
<b>50-54 yrs.</b>	<b>4,120</b>	<b>700</b>	<b>505</b>	<b>615</b>	<b>555</b>	<b>575</b>	<b>230</b>	<b>235</b>	<b>345</b>	<b>365</b>
50	820	125	105	125	110	125	45	45	70	75
51	835	145	105	115	110	120	45	50	70	75
52	830	150	85	120	120	100	45	50	75	75
53	800	145	110	125	100	110	40	40	65	65
54	835	130	100	130	105	120	60	50	70	80
<b>55-59 yrs.</b>	<b>3,295</b>	<b>530</b>	<b>435</b>	<b>520</b>	<b>405</b>	<b>485</b>	<b>190</b>	<b>175</b>	<b>275</b>	<b>285</b>
55	705	110	100	110	90	105	45	40	60	45
56	600	95	65	100	65	95	35	35	60	45
57	655	110	80	105	80	110	40	35	45	55
58	675	120	80	115	90	90	35	30	60	60
59	655	90	110	85	85	80	30	35	55	75
<b>60-64 yrs.</b>	<b>2,955</b>	<b>475</b>	<b>405</b>	<b>440</b>	<b>375</b>	<b>405</b>	<b>150</b>	<b>150</b>	<b>245</b>	<b>320</b>
60	655	100	95	95	90	90	35	25	55	60
61	540	80	65	85	70	80	25	20	40	65
62	595	110	90	80	60	80	25	30	45	75
63	595	105	75	90	80	70	35	35	45	60
64	570	85	75	85	70	85	25	30	50	60
<b>65-69 yrs.</b>	<b>2,675</b>	<b>470</b>	<b>360</b>	<b>380</b>	<b>330</b>	<b>365</b>	<b>140</b>	<b>115</b>	<b>220</b>	<b>295</b>
65	550	90	85	85	50	70	25	30	55	60
66	525	85	60	95	70	70	35	20	35	55
67	530	95	70	70	60	75	30	20	45	65
68	520	90	75	65	70	75	15	25	40	55
69	550	105	65	65	70	80	30	20	50	65
<b>70-74 yrs.</b>	<b>2,765</b>	<b>530</b>	<b>345</b>	<b>375</b>	<b>380</b>	<b>350</b>	<b>130</b>	<b>145</b>	<b>215</b>	<b>295</b>
70	600	115	65	85	85	70	40	35	55	60
71	565	115	80	75	75	60	25	30	40	55
72	560	105	70	80	65	80	25	25	40	65
73	540	100	50	65	95	80	15	30	35	65
74	505	90	75	70	65	65	25	30	35	50

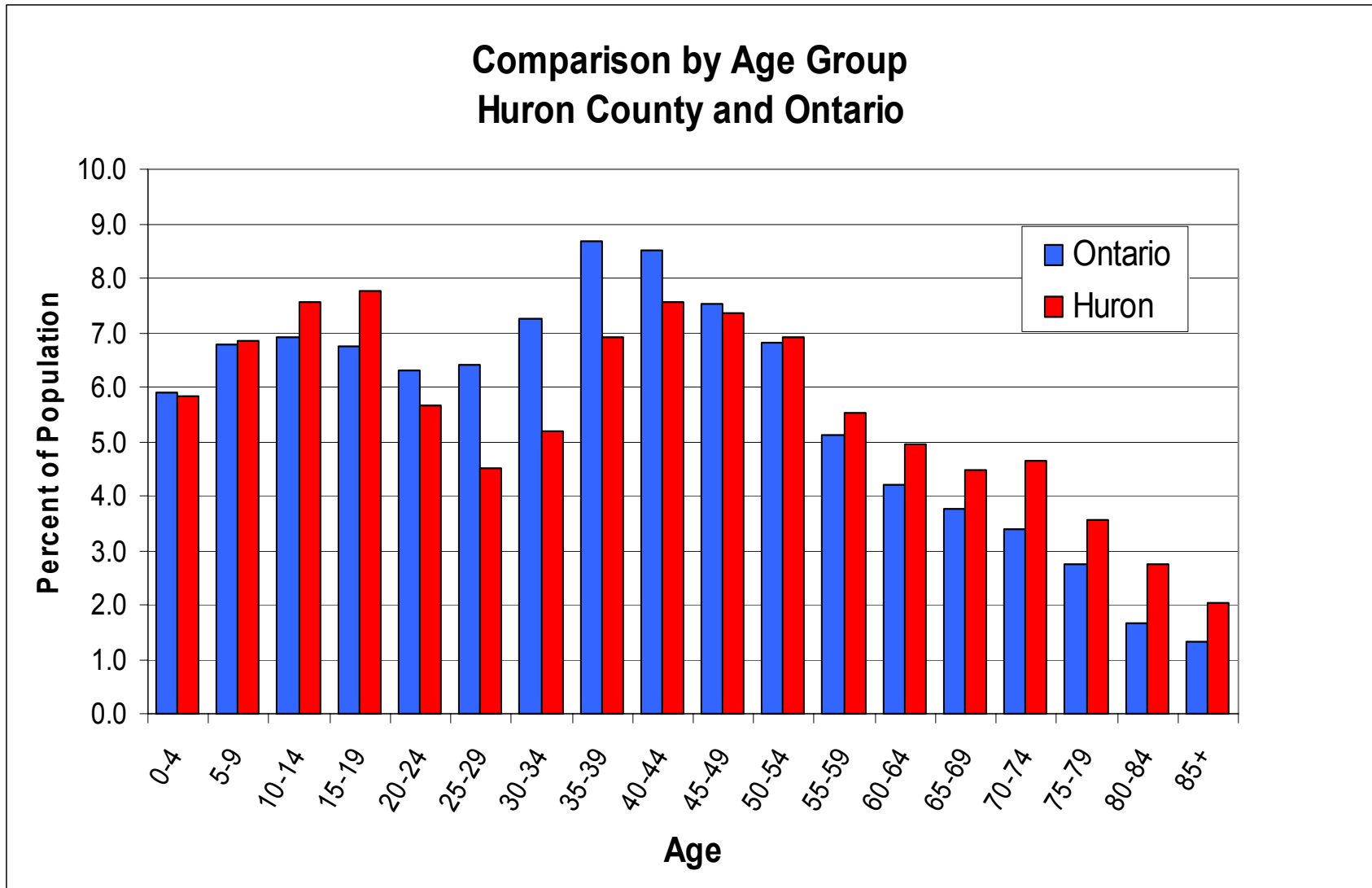
Continued on next page.

*A Collection of Statistical Data for Huron County and its Census Subdivisions*

Both Sexes Single Year	Huron County 58,700	South Huron 9,875	Bluewater 6,770	Central Huron 7,750	Goderich 7,405	Huron East 9,440	Howick 3,745	Morris- Turnberry 3,350	North Huron 4,965	Ashfield Colborne Wawanosh 5,400
<b>75-79 yrs.</b>	<b>2,115</b>	<b>450</b>	<b>225</b>	<b>300</b>	<b>330</b>	<b>295</b>	<b>80</b>	<b>105</b>	<b>155</b>	<b>170</b>
75	450	100	45	60	65	60	15	20	40	45
76	470	105	50	70	75	60	20	20	40	35
77	430	90	50	70	55	70	10	25	30	30
78	400	90	35	50	75	60	25	20	20	25
79	370	70	45	55	65	50	15	20	25	30
<b>80-84 yrs.</b>	<b>1,630</b>	<b>320</b>	<b>185</b>	<b>185</b>	<b>285</b>	<b>255</b>	<b>65</b>	<b>100</b>	<b>145</b>	<b>90</b>
80	410	75	45	45	75	60	20	30	35	25
81	385	75	40	55	60	70	15	25	30	15
82	335	80	30	30	65	50	10	20	40	15
83	260	45	35	35	45	35	15	15	20	15
84	240	45	30	25	40	35	10	15	15	10
<b>85-89 yrs.</b>	<b>810</b>	<b>135</b>	<b>100</b>	<b>90</b>	<b>165</b>	<b>135</b>	<b>35</b>	<b>55</b>	<b>65</b>	<b>35</b>
85	215	35	25	20	50	40	10	15	20	5
86	190	30	25	20	35	30	5	15	10	10
87	150	25	15	20	30	25	15	15	10	5
88	130	20	15	15	30	25	5	5	5	5
89	125	15	20	10	20	25	5	5	5	5
<b>90-94 yrs.</b>	<b>305</b>	<b>45</b>	<b>45</b>	<b>20</b>	<b>55</b>	<b>60</b>	<b>5</b>	<b>40</b>	<b>15</b>	<b>15</b>
90	100	15	15	10	20	20	0	15	5	10
91	80	15	10	10	15	20	0	5	5	0
92	60	5	5	0	10	10	5	10	5	5
93	35	10	5	0	0	10	5	10	0	0
94	25	5	10	5	5	5	0	5	5	0
<b>95-99 yrs.</b>	<b>80</b>	<b>15</b>	<b>20</b>	<b>5</b>	<b>20</b>	<b>15</b>	<b>5</b>	<b>5</b>	<b>0</b>	<b>0</b>
95	35	10	0	0	10	5	5	0	0	0
96	25	0	10	0	10	5	0	5	0	0
97	5	0	0	0	5	0	0	5	0	0
98	5	0	0	0	0	0	5	0	0	0
99	5	0	5	0	0	0	5	0	0	0
<b>Age 100+</b>	<b>10</b>	<b>0</b>	<b>5</b>	<b>0</b>	<b>0</b>	<b>5</b>	<b>0</b>	<b>0</b>	<b>0</b>	<b>0</b>

Table: 300\_1006

See graph on pages 30.



Commuting Patterns

	Huron County	South Huron	Bluewater	Central Huron	Goderich	Huron East	Howick	Morris-Turnberry	North Huron	Ashfield Colborne Wawanosh
Employed Workforce	30,470	5,125	3,515	4,035	3,715	4,955	1,860	1,890	2,620	2,740
# of people that report having a usual place of employment	22,375	3,945	2,495	2,835	3,280	3,590	1,190	1,230	2,025	1,795
% of workforce reporting "usual place of employment"	73%	77%	71%	70%	88%	73%	64%	65%	77%	66%
% of workforce reporting "usual place of employment" that live and work in the same municipality		66%	41%	40%	82%	38%	24%	10%	72%	21%
% of workforce reporting a "usual place of employment" that live and work in Huron County on a regular basis	78%	74%	80%	90%	94%	62%	41%	78%	84%	90%
# of people reporting a "usual place of employment" that is outside Huron County	4,865	1,035	500	285	205	1365	705	275	325	185
% of people reporting "usual place of employment" that is outside Huron County	22%	26%	20%	10%	6%	38%	59%	22%	16%	10%
Communities where most people commute to		London 12% Bluewater 6% St. Mary's 5%	South Huron 27% London 8% Central Huron 7%	Goderich 31% Huron East 8% Bluewater 7%	Central Huron 5% Huron East 3%	Stratford 11% North Perth 8% West Perth 7%	North Perth 33% Huron 19% Minto 13%	North Huron 54% Huron East 16% North Perth 10%	North Perth 6% Goderich 6% Huron East 4%	Goderich 54% North Huron 12% Central Huron 6%

Table 95F0490XCB1001on.ivt

	Total Commuters	North Perth	London	Stratford	West Perth	St. Mary's	Kitchener	Minto	North Middlesex	South Perth
# Of people commuting from Huron County to...	Outbound 3,535	850	775	565	360	215	130	130	90	70

Table 97F0015XCB01 003

